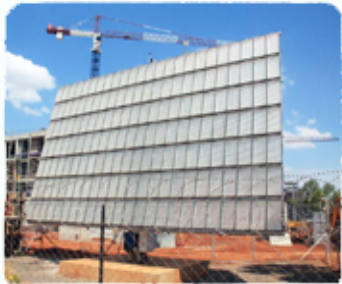


DECISIONS ON APPLICATIONS FOR POSTPONEMENT OF COMPLIANCE TIME-FRAMES: AQA S21



Climate Change and Air Quality



environmental affairs

Department:
Environmental Affairs
REPUBLIC OF SOUTH AFRICA

Dr Thuli N. Mdluli
National Air Quality Officer
MEDIA Briefing AQM
Parliament
24 February 2015



Applications Received

APPLICANT	PROVINCE	LICENSING AUTHORITY
Mortimer Smelter	North West	Bojanala DM
Polokwane Smelter	Limpopo	Capricorn DM
Eskom Tutuka	Mpumalanga	Gert Sibande DM
Eskom Matla	Mpumalanga	Nkangala DM
Eskom Majuba	Mpumalanga	Gert Sibande DM
Eskom Grootvlei	Mpumalanga	Gert Sibande DM
Eskom Duvha	Mpumalanga	Nkangala DM
Eskom Camden	Mpumalanga	Gert Sibande DM
Eskom Arnot	Mpumalanga	Nkangala DM
Eskom Kendal	Mpumalanga	Nkangala DM
Eskom Komati	Mpumalanga	Nkangala DM
Eskom Hendrina	Mpumalanga	Nkangala DM
Eskom Kriel	Mpumalanga	Nkangala DM

Applications Received

APPLICANT	PROVINCE	LICENSING AUTHORITY
Eskom Medupi	Limpopo	Provincial LEDET
Eskom Matimba	Limpopo	Provincial LEDET
Eskom Acacia	Western Cape	Cape Town Metro
Eskom Lethabo	Free State	Fezile Dabi DM
Eskom Port Rex	Eastern Cape	Buffalo City Metro
PPC De Hoek	Western Cape	West Coast DM
PPC Dwaalboom	Limpopo	Provincial LEDET
PPC Port Elizabeth	Eastern Cape	Nelson Mandela Bay Metro
PPC Slurry	North West	Provincial DACE
SASOL Infrachem	Free State	Fezile Dabi DM
SASOL Nitro	Gauteng	City of Tshwane
SASOL Secunda	Mpumalanga	Gert Sibande DM
Natref	Free State	Fezile Dabi DM

Applications Received

APPLICANT	PROVINCE	LICENSING AUTHORITY
Shell Polokwane Facility	Limpopo	Capricorn DM
Shell Port Elizabeth Facility	Eastern Cape	Nelson Mandela Metro
Shell Ladysmith Facility	Kwazulu-Natal	Uthukela DM
Shell Kimberly Facility	Northern Cape	Francis Baard DM
Total Polokwane Facility	Limpopo	Capricorn DM
Total Bethlehem Facility	Free State	Thabo Mofutsanyane DM
Engen	Kwazulu-Natal	Ethekwini Metro
Chevron*	Western Cape	Cape Town Metro
PFG*	Gauteng	Ekurhuleni

* Processing of applications not concluded due to outstanding information.

General Approach

- Standard Operating Procedure
- Checking compliance with legislated requirements:
 - Atmospheric Impact Report
 - Regulations for Atmospheric Dispersion Modelling
 - Public Participation
- Maintained current performance and set stricter limits in specific cases where current performance is less than standard– no emission caps
- Analysis conducted per pollutant and per facility – some units in facilities already in compliance
- Postponements: for existing plants who require more time to comply to legislation (nature of plant or investment schedule)

Summary of Postponement Decisions

- The tables below provide an overview of the postponement decision made by the Department.
- The decisions are per applicant and per facility.
- Red indicates cases whereby application for postponement was declined.
- Green indicates cases whereby application for postponement was granted
- Blue indicates cases whereby the applicant did not apply for postponement.

Eskom

	PM		SO2		NOx	
	2015	2020	2015	2020	2015	2020
ESKOM						
ACACIA						
ARNOT						
CAMDEN						
DUVHA						
GROOTVLEI						
HENDRINA						
KENDAL						
KOMATI						
KRIEL						
LETHABO						
MAJUBA						
MATIMBA						
MATLA						
PORT REX						
TUTUKA						
GRANTED	6		1	12	7	6
NOT GRANTED	6	1	0	0	0	0
DID NOT APPLY	2		0	2	2	2

PPC

	PM		ALL OTHER POLLUTANTS NOT APPLIED FOR			
	2015	2020				
PPC						
DE HOEK						
DWAALBOOM						
PORT ELIZABETH						
SLURRY						
GRANTED						
NOT GRANTED						

Anglo American Platinum

	SO2		ALL OTHER POLLUTANTS NOT APPLIED FOR			
	2015	2020				
ANGLO AMERICAN						
MORTIMER						
POLOKWANE						
GRANTED	2					
NOT GRANTED	0					

SHELL

	TVOCs		ALL OTHER POLLUTANTS NOT APPLIED FOR			
	2015	2020				
SHELL						
PORT ELIZABETH						
POLOKWANE						
LADYSMITH						
KIMBERLY						
GRANTED	4					
NOT GRANTED	0					

TOTAL

	TVOCs		ALL OTHER POLLUTANTS NOT APPLIED FOR			
	2015	2020				
TOTAL						
BETHLEHEM						
POLOKWANE						
GRANTED						
NOT GRANTED						

2

0

General Approach and Observations

- National Ambient Air Quality Standards for PM (both PM_{2.5} and PM₁₀) have become stricter on 01 January 2015. It is important to note that these standards have been and are also currently being exceeded in different parts of the country, particularly in the National Priority Areas. In this regard, application for postponement for PM beyond the year 2020 have not been granted. These will be considered in 2019 when there is data showing national performance regarding PM and associated compliance with national ambient air quality standards.

General Approach and Observations

- All applications were analyzed by the specialized team in the Department as well as the respective Atmospheric Emission Licensing Authorities (AELAs). This analysis included studying emission monitoring reports which facilities submit to AELAs to ascertain current industrial performance for all applicants. It revealed that some facilities were actually compliant with some of the limits they had applied for. They were actually wanting to get “emission caps” so they have more room to exceed emission limits. However, the current legislation does not provide for emission caps and in this regard, such applications were denied.



environmental affairs

Department:
Environmental Affairs
REPUBLIC OF SOUTH AFRICA

