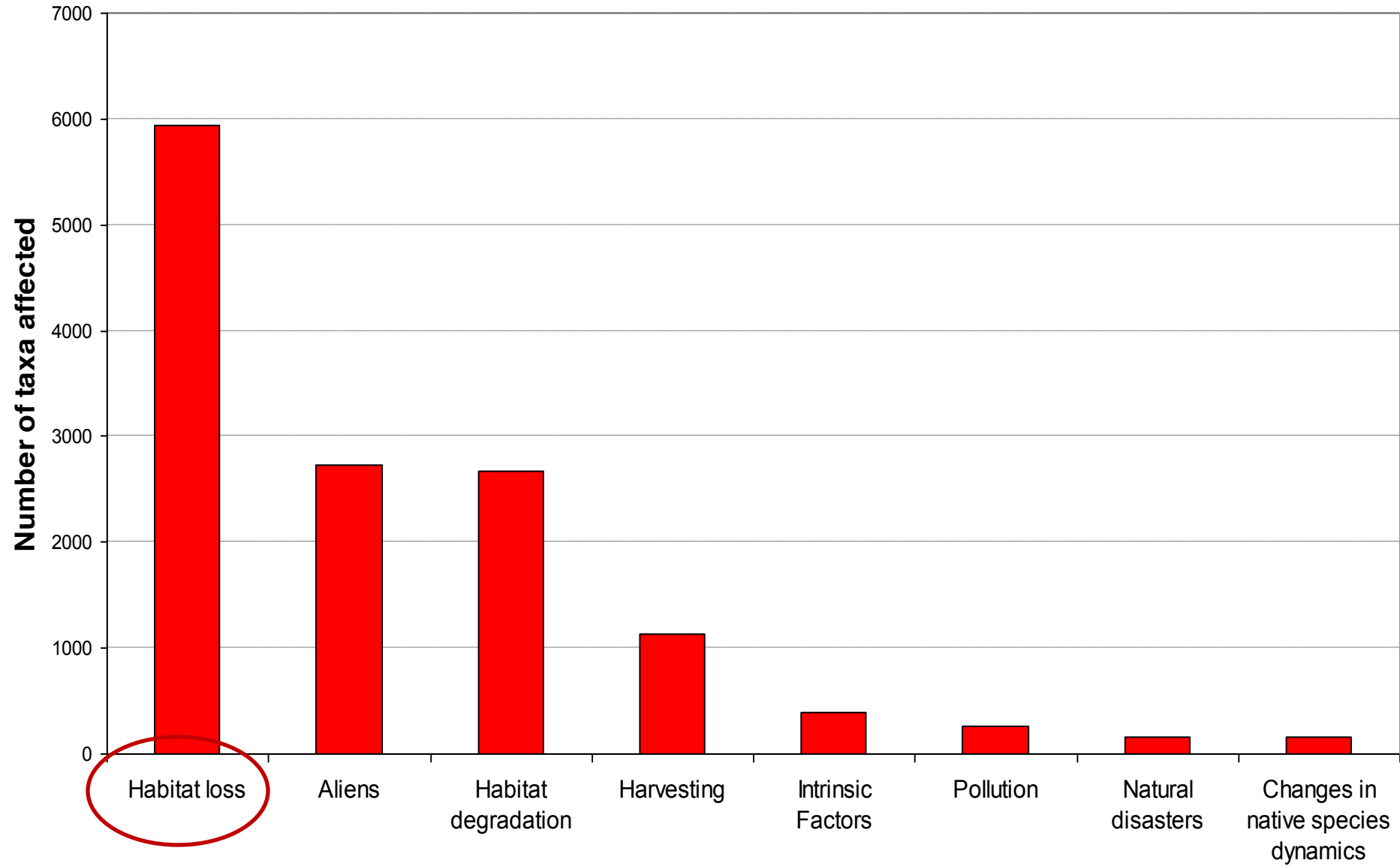


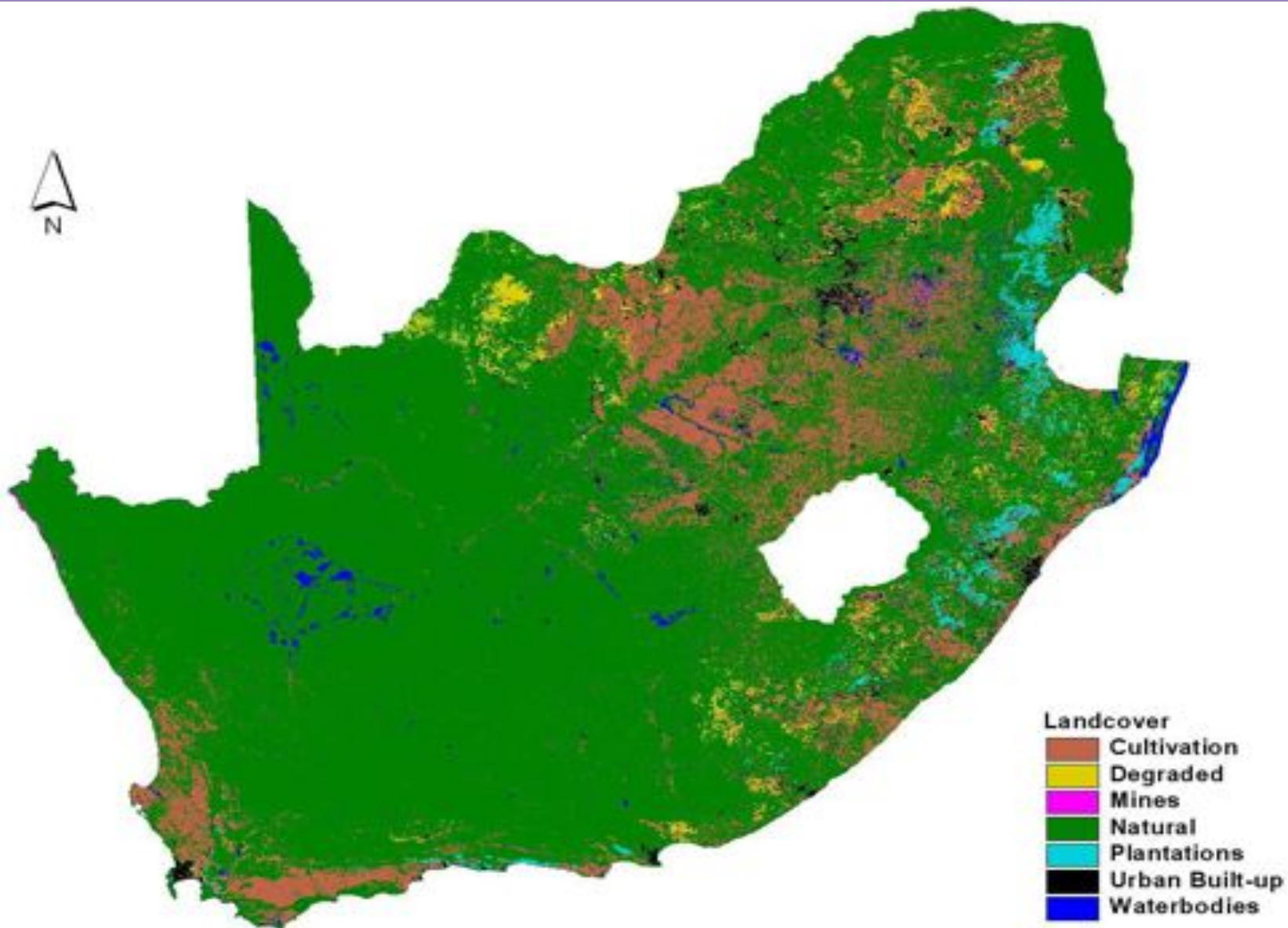
Impact of conversion of virgin land on biodiversity



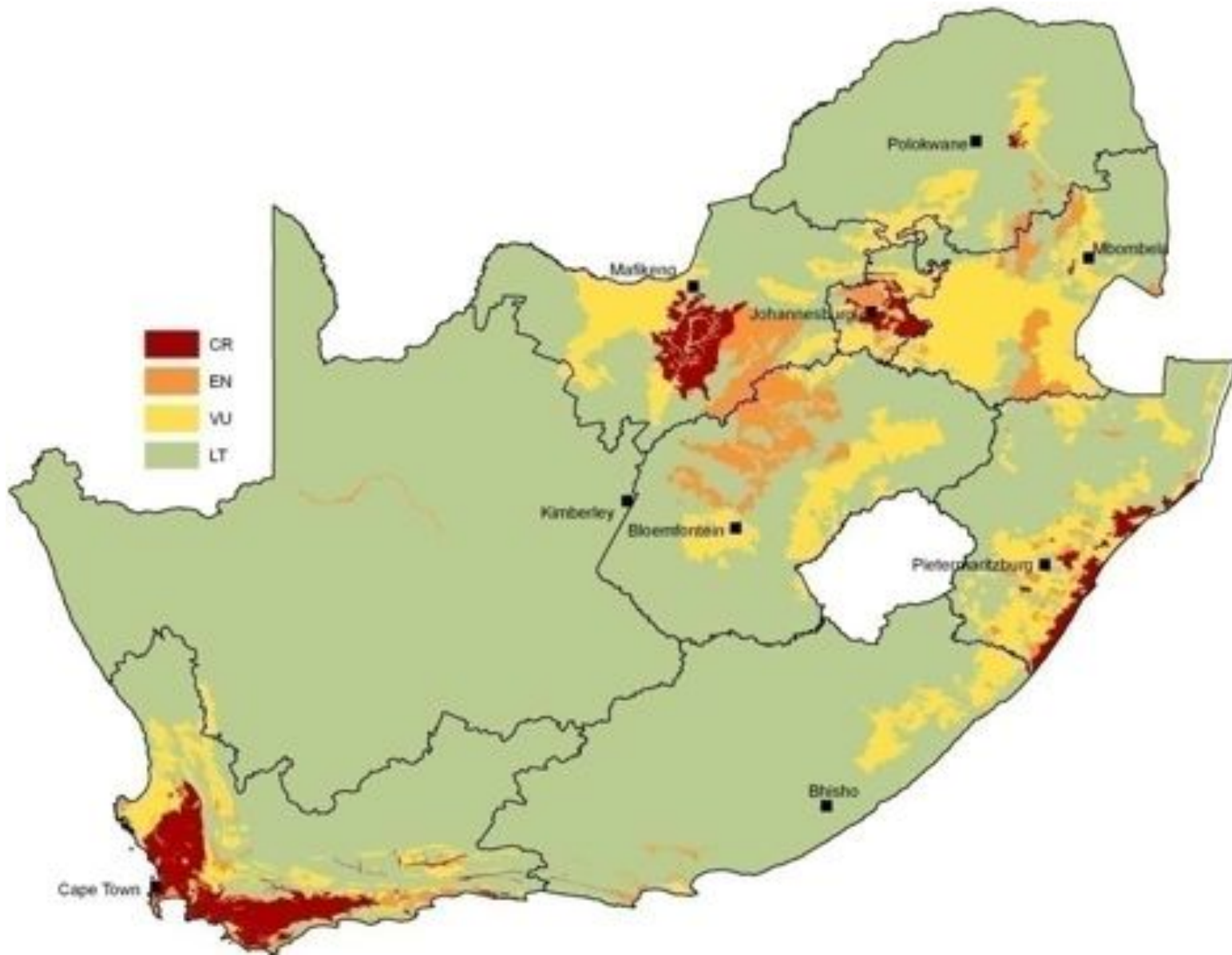
Primary cause of biodiversity loss



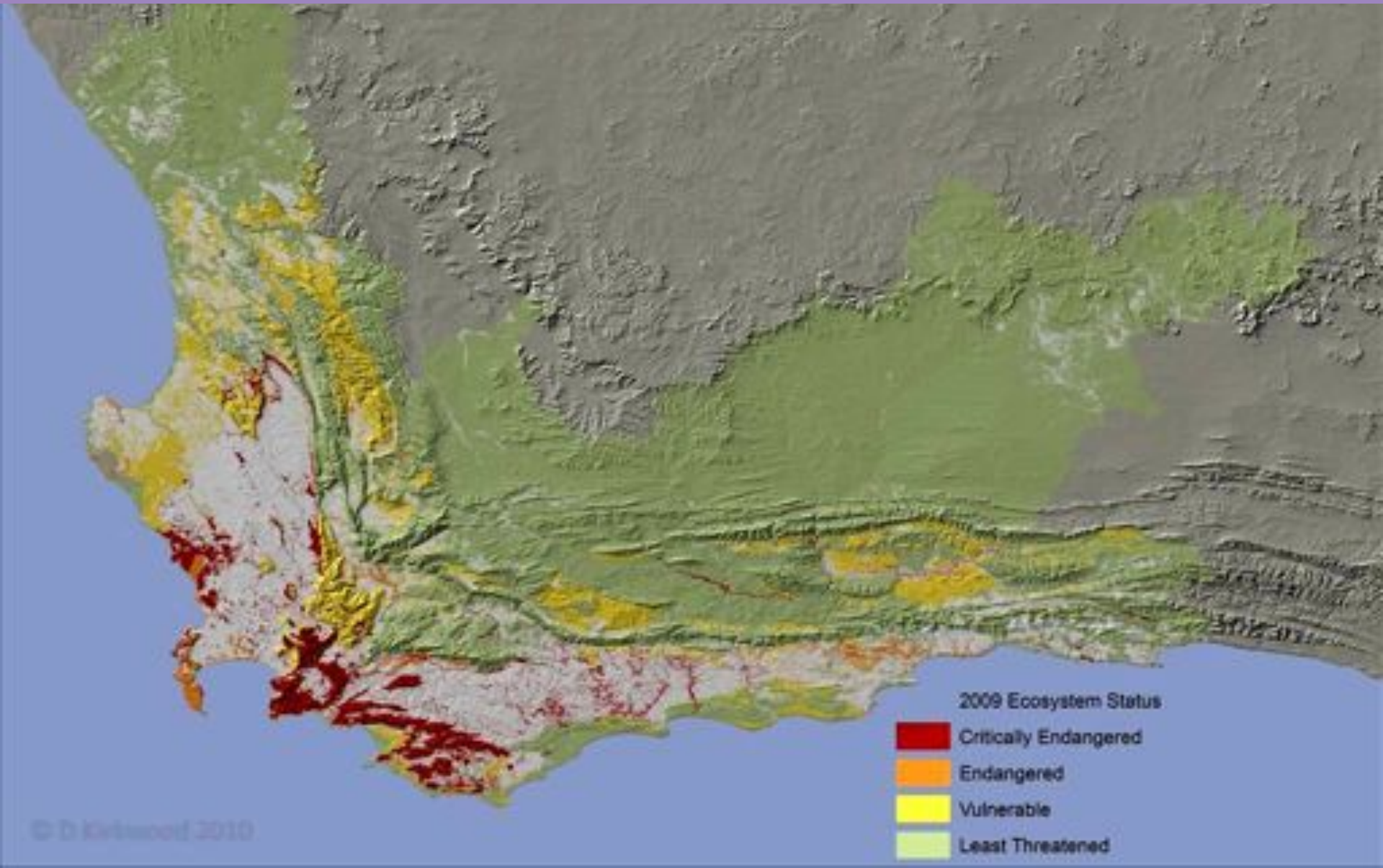
History of Cultivation



Ecosystem Threat Status



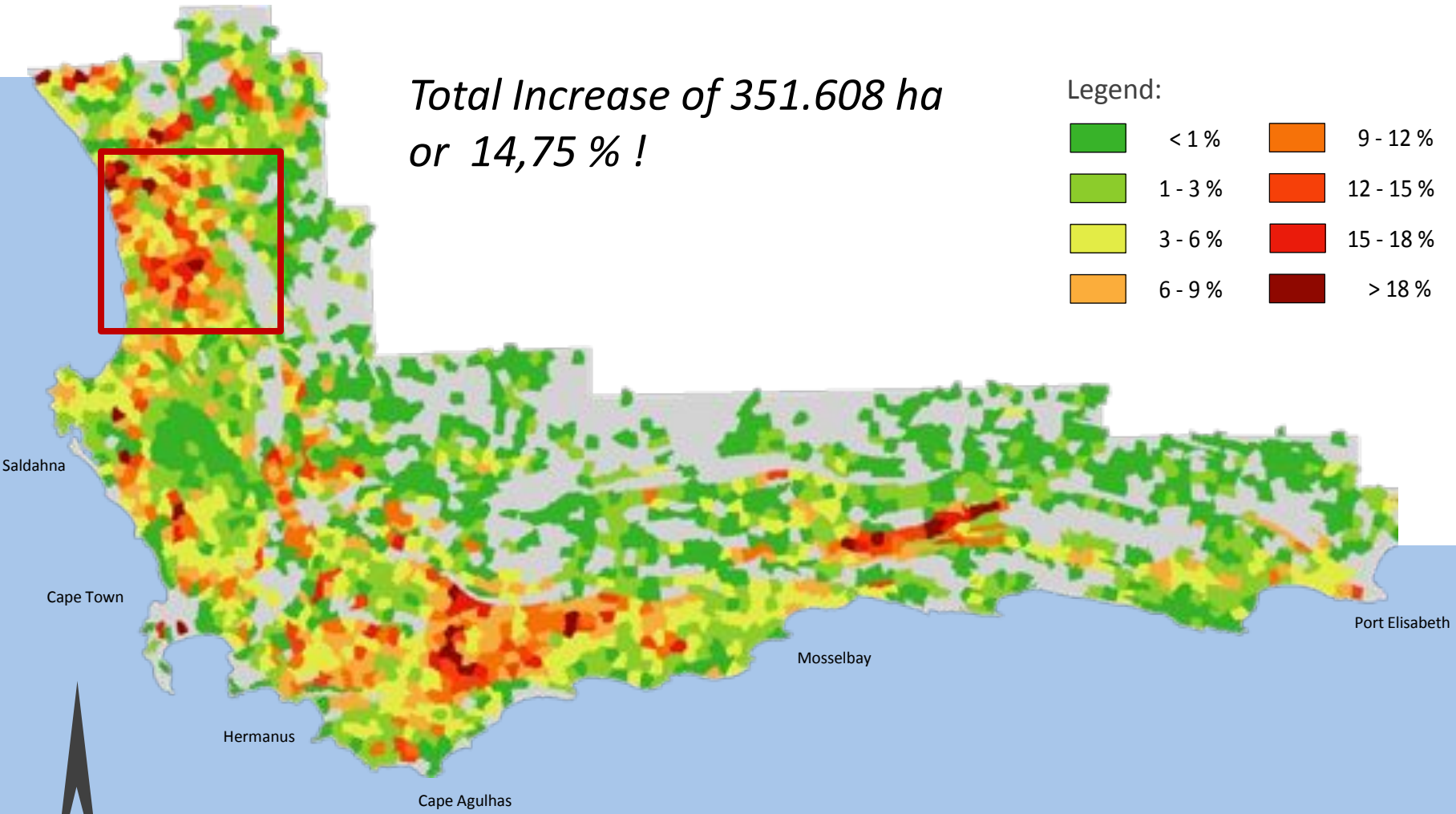
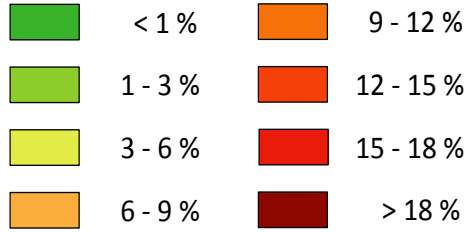
Ecosystem Threat Status – W.Cape



Cultivation increase 2000-2007

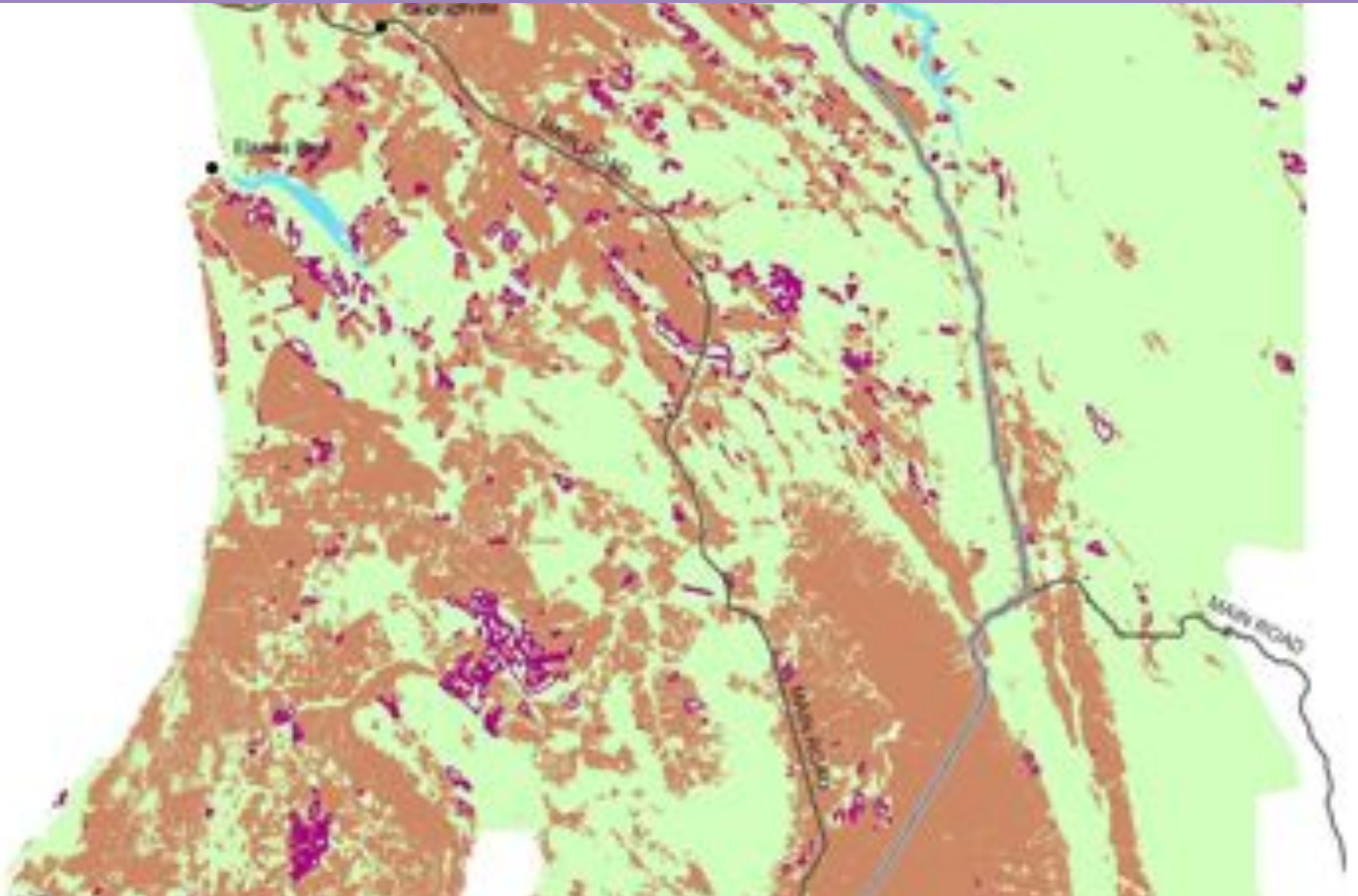
*Total Increase of 351.608 ha
or 14,75 % !*

Legend:

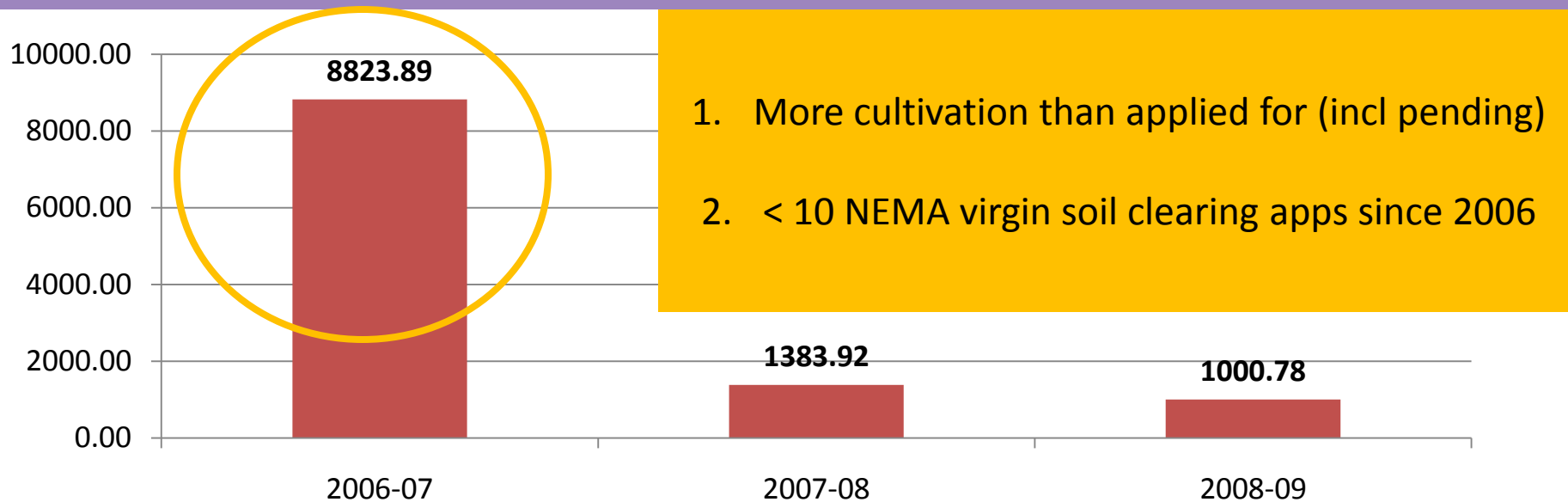


Spatial distribution according to
National Geospatial Analysis Platform (GAP), Version 2.

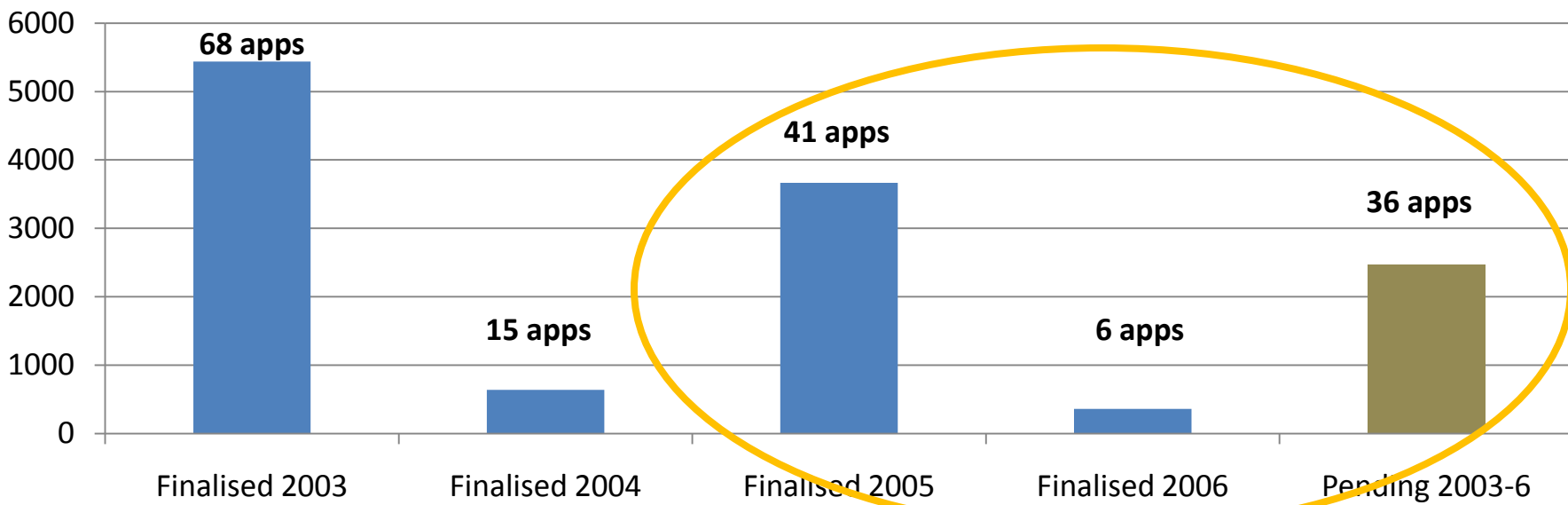
Sandveld: Virgin veld cleared 2006- 2009



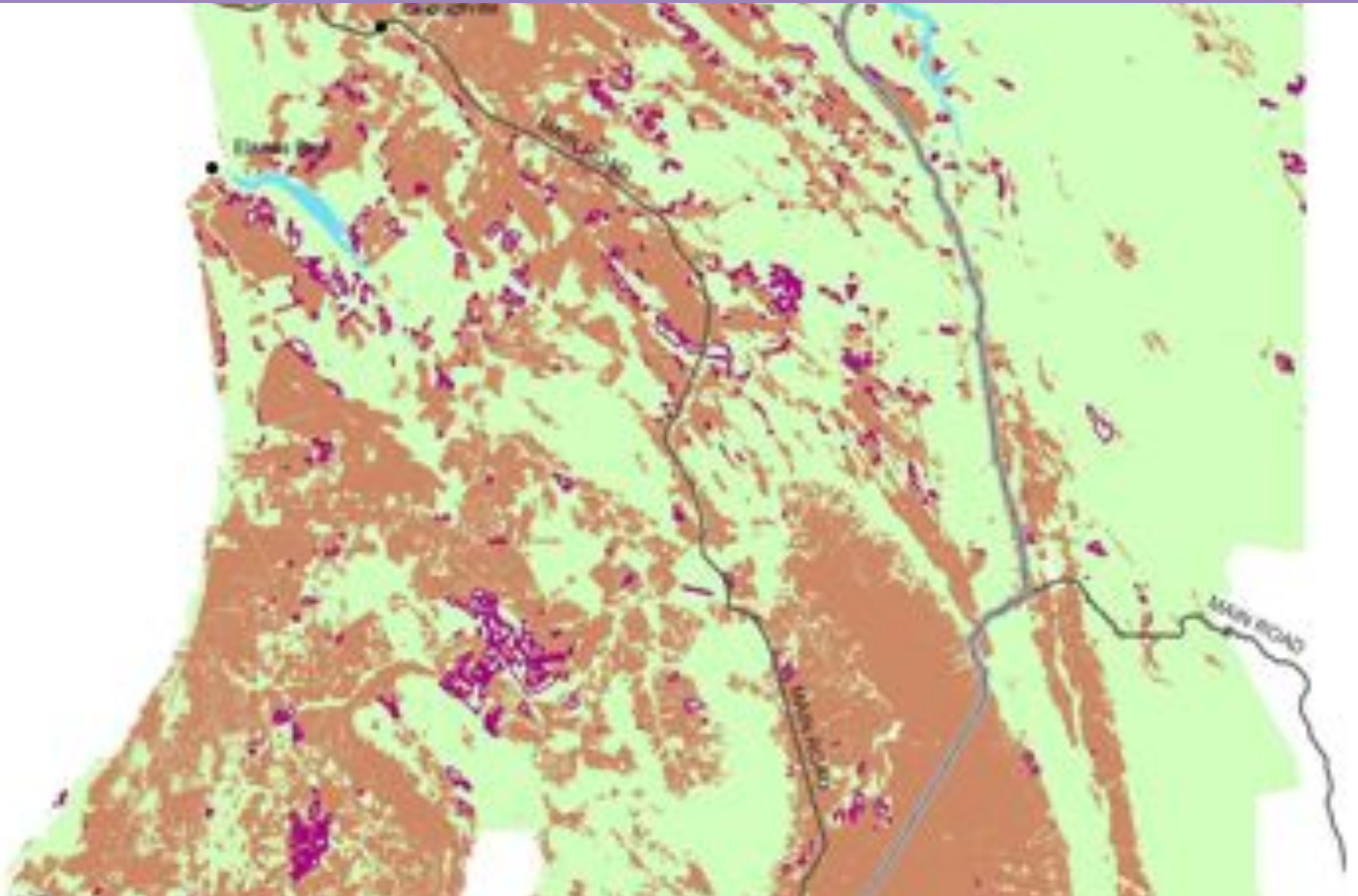
Sandveld: Virgin veld clearing



- 1. More cultivation than applied for (incl pending)
- 2. < 10 NEMA virgin soil clearing apps since 2006



Sandveld: Virgin veld cleared 2006- 2009



Farms with > 3 ha virgin veld clearing 2006-2009



Risks to ecologically sustainable development

- Inadequate regulation of cultivation of virgin soil, from a CARA and NEMA perspective.
- Illegal cultivation
- Poor records and inadequate information



Thank you!